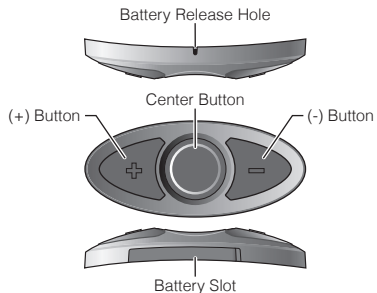
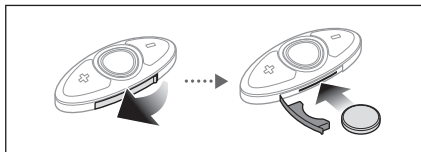


# RC3 Quick Start Guide



## Getting Started



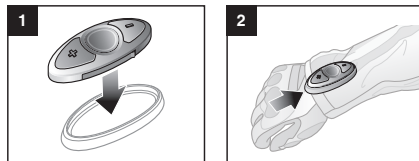
### Note:

- When closing the battery slot, insert both ends of the rubber first.
- To remove the battery, insert a paper clip through the Battery Release Hole.

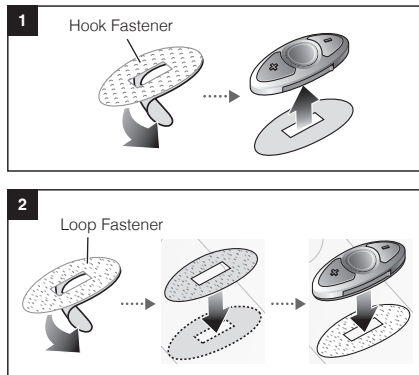
## Installation

There are three ways of installing the RC3.

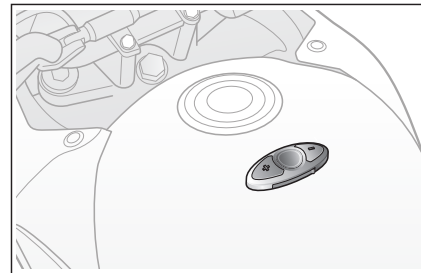
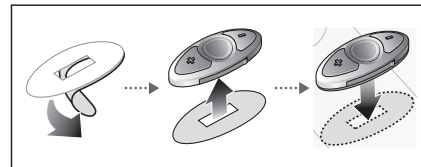
### Using the Clip



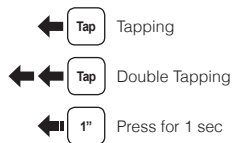
### Using the Hook and Loop Fasteners



### Using the Adhesive Tape



## Button Operation



## Power On/Off

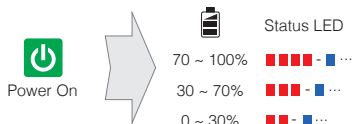
### Power On



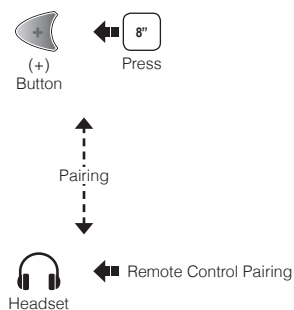
### Deep Sleep



## Battery Check



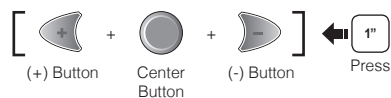
## Bluetooth Pairing



### Note:

- You can control the headset using the RC3 only after you pair them together.
- The RC3 supports Sena headsets with Bluetooth 4.1.

## Factory Reset



## Headset Control

To control your headset using the RC3, please refer to the Quick Reference Guide for button operations on functions such as phone, music, and intercom.



Sena Technologies, Inc.

[www.sena.com](http://www.sena.com)

Customer Support: [support.sena.com](mailto:support.sena.com)

E-mail: [support@sena.com](mailto:support@sena.com)